

## Motorola SB6120 SURFboard DOCSIS 3.0 Cable Modem Review



**April 5, 2010**  
**SB6120 Review by Dan Karas**

**NEW**

### Motorola SB6120 SURFboard Cable Modem Review:



I just got a great deal one of these from [Amazon](#) with **FREE Super Saver Shipping** and no sales tax. After it was installed, I was pleasingly surprised at the amazing performance boost in my COX Cable Internet speeds. The SB6120 is reasonably priced, easy to install, and it's raw speed will blow you away.

If your existing Cable modem is more than a couple of years old, you are probably paying the cable Internet provider for more speed than your old modem can deliver. This new Next Generation DOCSIS® 3.0 technology lets you surf up to 4x faster than older DOCSIS® 2.0 broadband cable modems. If your modem is more than 5 years old and uses DOCSIS® 1.1 or older technology, you should definitely upgrade to take advantage of the lightning-fast broadband speeds that the SB6120 can provide.

The Motorola SurfBoard eXtreme Cable Modem is capable of reaching data rates up to 150 Mbps. That makes gaming, shopping, downloading, working, high-quality voice and video conferencing, and peer-to-peer networking applications far more realistic, faster, and efficient than ever before. The SB6120 delivers your complete personal media experience, at lightning-fast broadband speed.

So what are you waiting for? [Save 20% on a New SB6120 at Amazon](#) through this link.

### SB6120 Key Features?

- Delivers a realistic gaming experience – watch as games come to life
- Next Generation DOCSIS® 3.0; backwards compatible to DOCSIS 2.0
- Up to 4x faster than DOCSIS 2.0 cable modems
- Enhance your interactive gaming experience
- Easy to install and simple to use

### SURFboard Installation?

Installation of the Motorola 6120 was very easy. I had mine up and running in less than 30 minutes.

1. Unbox the Modem, Ethernet cable and power adapter.
2. Connect the Coaxial cable from your Internet provider.
3. Connect the Ethernet cable to your router's WAN port or your computer's network card.
4. Plug in the power adapter and connect to the modem.
5. Call your cable Internet provider and activate your new modem.
6. That's It! - Enjoy your increased Internet speed.

### Amazon Customer Reviews:

★★★★★ So dogone fast!, April 2, 2010 By James R.

This review is from: [Motorola SB6120 SURFboard DOCSIS 3.0 eXtreme Broadband Cable Modem](#) (Electronics)

"My old modem was flaking out and I wanted to take advantage of the new speeds that Comcast was offering. I looked at the reviews, ordered the modem through the miracle of Prime, got it the next day. This thing is fast! I set it up, called Comcast so they can add my MAC address to their watch list, and that was it. I'm getting up to 20M on a 12M plan and I have a much more reliable SSH connection when I need it. If you are in the area where DOCSIS 3 is available, if you have the means, I highly recommend picking one up."

★★★★★ Saving money and works smoothly, March 29, 2010 By Vivek G.

This review is from: [Motorola SB6120 SURFboard DOCSIS 3.0 eXtreme Broadband Cable Modem](#) (Electronics)

"Before I moved to my new home I purchased this cable modem based on the reviews the Motorola cable modems were getting in general. This had the latest DOCSIS standard and had a gigabit ethernet connector (more than I need right now, but...). I've owned it a month now and have had no problems whatsoever with it. The installation and setup with Charter (my cable and internet provider) was problem free and having it operate with my Apple Airport Extreme has been trouble free. I watch a lot of online tv (Hulu and Netflix) and haven't had any problems where I've had to reset the modem as I previously did with other modem/routers I've owned. The bonus is that within a year or so I will have recovered the money I spent on this by not having to pay Charter to rent the cable modem from them. At this point I can completely recommend purchase of the Motorola SB6120 for anyone looking for a fast and trouble free cable modem."

### Motorola SB6120 Cable Modem Status:

If you type the IP address 192.168.100.1 in your browser you get these SB6120 system menus.

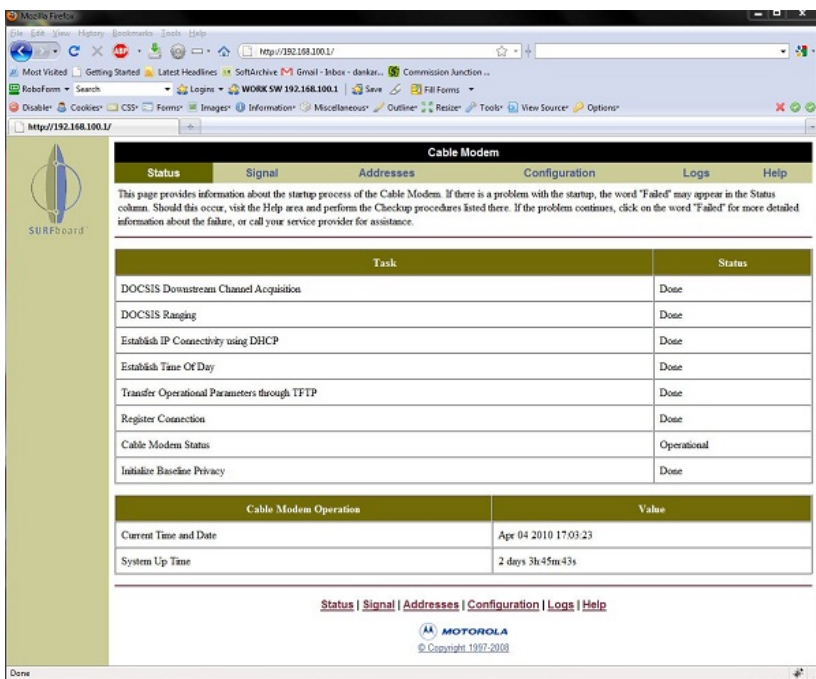
#### Modem Status:

The Modem Status Page provides information about the startup process of the Cable Modem. When you first access the Cable Modem, this page is displayed. The last line of the Modem Status Page gives the status of the Cable Modem. Under normal conditions this should read "Operational". If the last line does not read "Operational", a Standard Checkup should be performed.

#### Modem Signal

The Modem Signal Page provides information about the connection between the Cable Modem and the cable company.

#### Modem Addresses



The Modem Addresses Page provides information about the network connection between the Cable Modem and your computer. Also, it provides details about the connection between the Cable Modem and the service provider's computer systems.

### **Modem Configuration**

The Modem Configuration Page provides information about the current configuration of the Cable Modem.

### **Modem Logs**

The Modem Logs Page provides diagnostic messages generated by the Cable Modem. It is intended for use by a qualified technician.

### **Modem Help**

The Modem Help Page provides information about how to troubleshoot the Cable Modem.

### **SB6120 Cable Modem Troubleshooting:**

- Check to make sure that the coaxial cable connecting your Cable Modem to the cable wall outlet is connected, and that the screws have been tightened.
- Check to make sure that the power cord on the Cable Modem is plugged into a wall outlet, and that the Power light on the front of the Cable Modem is on.
- Check to make sure that the 10/100BaseT Ethernet cable between the Cable Modem and your computer is connected, and the connectors are locked in place.
- Check to make sure that the Send, Receive, and Online lights on the front of the Cable Modem are on or blinking. If the lights are off and do not blink, reboot the modem by disconnecting and reconnecting the power plug in the back of the modem.
- please consult the Cable Modem User Guide for additional information.

[ISP 1](#) reviews Internet access related products and services.